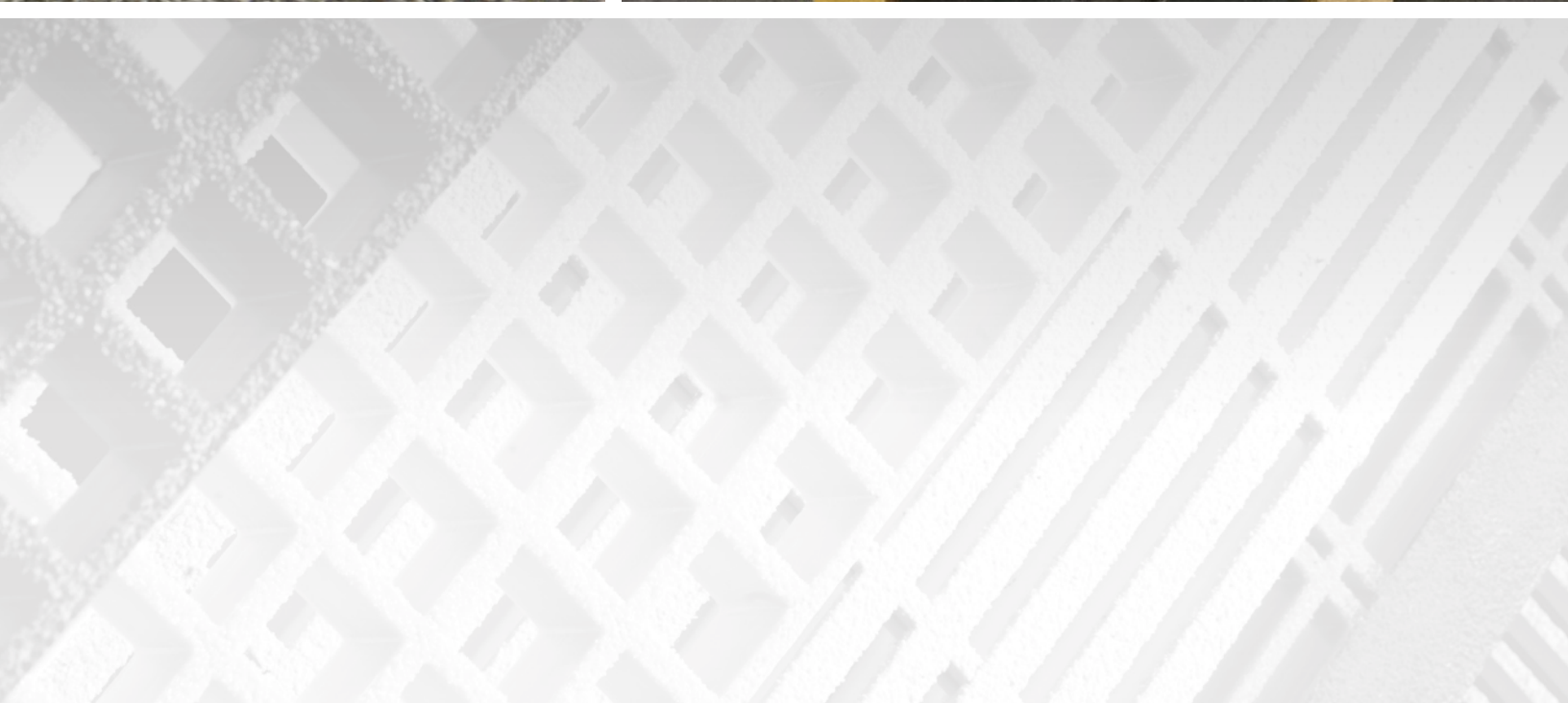
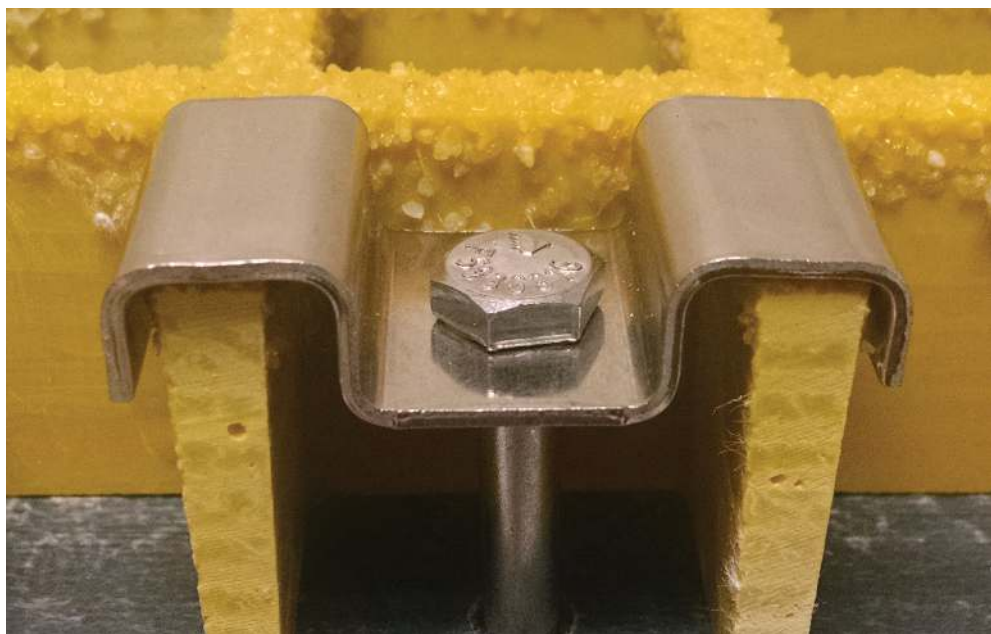
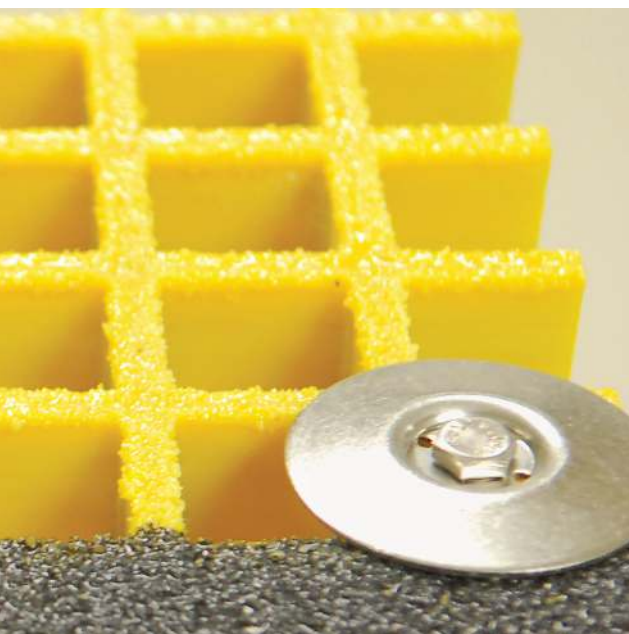


RECOMMENDED FASTENERS

PROGrid® and PROGrate® Products



PROGrid® Recommended Fasteners

PROGrid® Molded Grating

Type	Depth/Thickness	Grid Pattern	Available Panel Size	Weight/Sq Ft	Open Area	Recommended Fasteners	
RECTANGULAR							
	1"	Rectangular	1" x 4"	12' x 4'* / 10' X 3'*	2.61	68%	M-L-C
SQUARE							
ADA	1"	Square	¾" x ¾"	4' x 12'	4.06	44%	M-W
	1"	Square	1½" x 1½"	3' x 10' / 4' x 8' / 4' x 12'	2.50	69%	M-L-C
ADA	1½"	Square	¾" x ¾"	4' x 12'	4.75	44%	M-W
	1½"	Square	1½" x 1½"	3' x 10' / 3' x 12' / 4' x 8' / 4' x 12' / 5' x 10'	3.94	68%	M-L-C
	2"	Square	2" x 2"	4' x 12'	4.51	71%	M-L-C
SQUARE COVERED							
	1⅛"	Square Covered	1½" x 1½"	4' x 12'	2.73	N/A	W
	1⅝"	Square Covered	1½" x 1½"	4' x 6'	5.17	N/A	W

PROGrid® Molded Grating – SPECIAL ORDER

Type	Depth/Thickness	Grid Pattern	Available Panel Size	Weight/Sq Ft	Open Area	Recommended Fasteners	
RECTANGULAR							
ADA	1½"	Rectangular	1" x 6"	4' x 12'	4.71	38%	M-L-C
	1½"	Rectangular	1½" x 6"	4' x 12'	4.42	55%	M-L-C
SQUARE							
	½"	Square	1½" x 1½"	4' x 12'	1.33	72%	M-L-C
	½"	Square	2" x 2"	4' x 12'	1.01	78%	M-L-C

PROGrid® Molded Grating – High Load Capacity (HLC)

Type	Depth/Thickness	Grid Pattern	Available Panel Size	Weight/Sq Ft	Open Area	Recommended Fasteners	
RECTANGULAR							
HLC	1½"	Rectangular	1" x 2"	4' x 6'	6.21	48%	W
HLC	2"	Rectangular	1" x 2"	4' x 6'	8.40	48%	W

PROGrid® Molded Stair Treads

Type	Depth/Thickness	Grid Pattern	Available Panel Size	Weight / Sq Ft	Open Area	Recommended Fasteners	
	1½"	Rectangular	1½" x 6"	24" x 144"	8.00	65%	M-L
	1½"	Square	1½" x 1½"	12" x 144"	4.00	68%	M-L
	1½"	Square	1½" x 1½"	25" x 144"	8.50	68%	M-L

* Load bars run in the short dimensions, 3' or 4'.

PROGrate® Recommended Fasteners

PROGrate® Pultruded Grating

Series	Depth/Thickness	Load Bar Type/Spacing	Cross Rod Spacing	Available Panel Size	Weight/Sq Ft	Open Area	Recommended Fasteners
T-BAR							
T 20-50	2"	T / 2"	6"	3' x 20' / 4' x 20'	3.43	50%	M
I-BAR							
I 10-60	1"	I / 1½"	6"	3' x 20' / 4' x 20' / 3' x 24' / 4' x 24'	2.47	60%	M-L
I 15-60	1½"	I / 1½"	6"	3' x 20' / 4' x 20' / 3' x 24' / 4' x 24'	2.97	60%	M-L
I 10-83	1"	I / 1.9"	6"	3' x 20'	2.00	83%	L

PROGrate® Pultruded Grating – SPECIAL ORDER

Series	Depth/Thickness	Load Bar Type/Spacing	Cross Rod Spacing	Available Panel Size	Weight/Sq Ft	Open Area	Recommended Fasteners
T-BAR							
T 10-18*†	1"	T / 2"	6"	Made to Order	2.39	18%	W
T 10-33*	1"	T / 1½"	6"	Made to Order	2.25	33%	W
T 10-35	1"	T / 2½"	6"	Made to Order	2.00	35%	W
T 10-50	1"	T / 2"	6"	Made to Order	1.81	50%	W
T 15-17*	1½"	T / 1.2"	6"	Made to Order	3.39	17%	W
T 15-33	1½"	T / 1½"	6"	Made to Order	2.81	33%	W
T 15-50	1½"	T / 2"	6"	Made to Order	2.23	50%	W
T 20-33*	2"	T / 1½"	6"	Made to Order	4.44	33%	M-L
I-BAR							
I 10-40*†	1"	I / 1"	6"	Made to Order	3.47	40%	M-L
I 10-50	1"	I / 1.2"	6"	Made to Order	2.97	50%	M-L
I 15-40*†	1½"	I / 1"	6"	Made to Order	4.22	40%	M-L
I 15-50	1½"	I / 1.2"	6"	Made to Order	3.60	50%	M-L
I 10-40-ADA*	1"	I / .52"	6"	Made to Order	4.08	40%	M-L
I 10-50-ADA*	1"	I / .63"	6"	Made to Order	3.50	50%	M-L
I 10-60-ADA*	1"	I / .78"	6"	Made to Order	2.92	60%	M-L
I 15-40-ADA*	1½"	I / .52"	6"	Made to Order	5.32	40%	M-L
I 15-50-ADA*	1½"	I / .63"	6"	Made to Order	4.64	50%	M-L
I 15-60-ADA*	1½"	I / .78"	6"	Made to Order	3.74	60%	M-L
I 30-40-ADA*	3"	I / 1"	3"	Made to Order	12.28	40%	W
I 30-50	3"	I / 1.2"	3"	Made to Order	10.34	50%	W
I 30-60	3"	I / 1½"	3"	Made to Order	8.40	60%	W

* ADA Compliant

† VGBA Approved

PROGrate® Recommended Fasteners

PROGrate® Heavy Duty Pultruded Grating – SPECIAL ORDER

Series	Depth/Thickness	Load Bar Type/Spacing	Cross Rod Spacing	Available Panel Size	Weight/ Sq Ft	Open Area	Recommended Fasteners
HD 10-40*	1"	HD Bearing Bar / 1"	6"	Made to Order	5.84	40%	M-L
HD 10-50	1"	HD Bearing Bar / 1.2"	6"	Made to Order	4.94	50%	M-L
HD 10-60	1"	HD Bearing Bar / 1½"	6"	Made to Order	4.05	60%	M-L
HD 15-40*	1½"	HD Bearing Bar / 1"	6"	Made to Order	9.13	40%	M-L
HD 15-50	1½"	HD Bearing Bar / 1.2"	6"	Made to Order	7.69	50%	M-L
HD 15-60	1½"	HD Bearing Bar / 1½"	6"	Made to Order	6.25	60%	M-L
HD 20-40*	2"	HD Bearing Bar / 1"	6"	Made to Order	11.81	40%	W
HD 20-50	2"	HD Bearing Bar / 1.2"	6"	Made to Order	9.92	50%	W
HD 20-60	2"	HD Bearing Bar / 1½"	6"	Made to Order	8.03	60%	W
HD 25-40*	2½"	HD Bearing Bar / 1"	3"	Made to Order	14.48	40%	W
HD 25-50	2½"	HD Bearing Bar / 1.2"	3"	Made to Order	12.14	50%	W
HD 25-60	2½"	HD Bearing Bar / 1½"	3"	Made to Order	9.81	60%	W

PROGrate® Pultruded Phenolic Grating – SPECIAL ORDER

Series	Depth/ Thickness	Load Bar Type/Spacing	Cross Rod Spacing	Available Panel Size	Weight/ Sq Ft	Open Area	Recommended Fasteners
I 15-60-PH	1½"	I / 1½"	6"	Made to Order	3.06	60%	M-L

PROGrate® Pultruded Stair Treads

Series	Depth/ Thickness	Load Bar Type/Spacing	Cross Rod Spacing	Available Panel Size	Weight/ Sq Ft	Open Area	Recommended Fasteners
I 15-60	1½"	I / 1½"	6"	12" x 144"	2.97	60%	M-L
T 20-50	2"	T / 2"	6"	12" x 144"	3.43	50%	M-L

* ADA Compliant



BEDFORD REINFORCED PLASTICS: ONE CORPORATE DRIVE, SUITE 106, BEDFORD, PA 15522 USA
LOCATIONS NATIONWIDE: BEDFORD, PA · CORONA, CA · FRESNO, CA · HOUSTON, TX · TAVARES, FL · SALT LAKE CITY, UT

The photographs and/or drawings in this literature are for illustrative purposes only. While every reasonable effort has been made to ensure the accuracy of this data, we are not responsible for any errors or omissions contained on these pages. Please verify any information in question with a Bedford sales representative. We reserve the right to make changes in specifications without notice and without incurring obligation.

Contact Bedford for details on our ship date guarantee and PROForms® warranty. © 2017 Bedford Reinforced Plastics. All rights reserved.

Request additional information at bedfordreinforced.com or call **800-377-3280**.