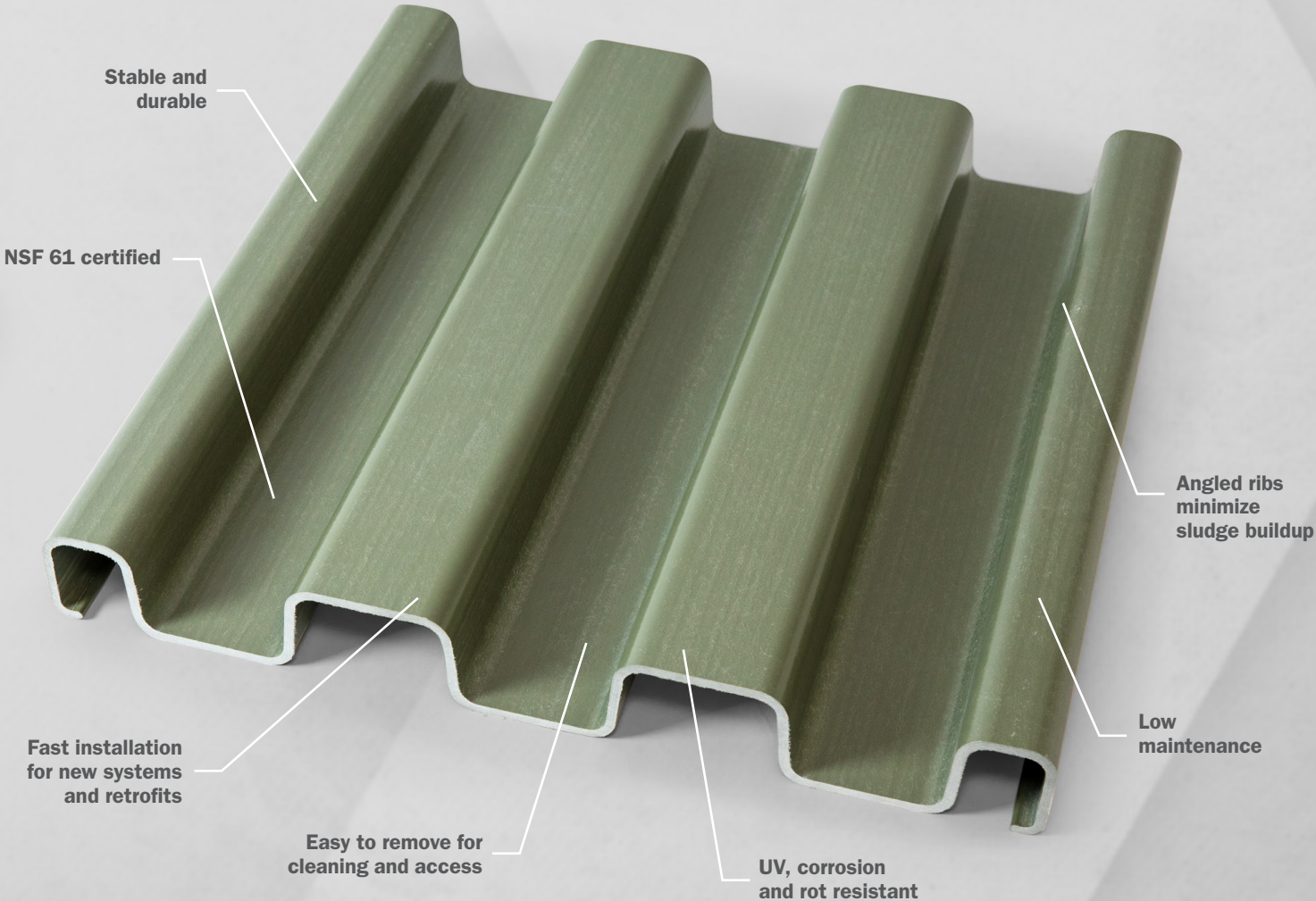


# 24" BAFFLE PANELS

Easily meet the panel needs of nearly every flow control application. These fiberglass-reinforced polymer (FRP) baffle panels are exactly what you expect from Bedford products: lightweight for installation ease while delivering high strength for long-term reliability. Resistant to rot and corrosion, Bedford baffle panels are ideal for wastewater, retention basins, aeration chambers and other flow control applications.

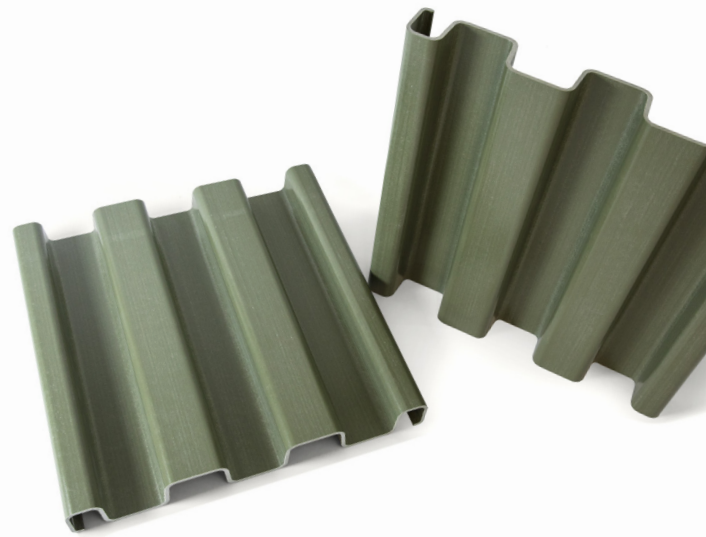


Order at [bedfordreinforced.com](http://bedfordreinforced.com) or call 814-623-8125.



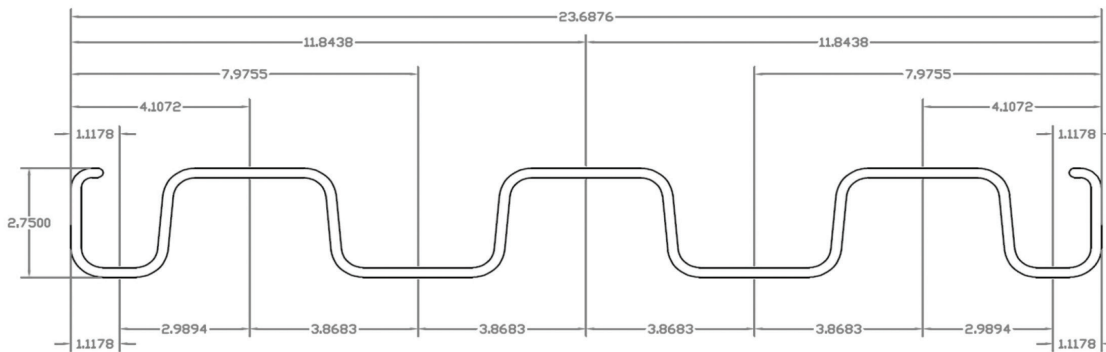
# THE FLEXIBILITY YOU WANT. THE STRENGTH YOU NEED.

With a 24" nominal width, lightweight Bedford baffle panels give you the design and fabrication freedom you want, while the FRP construction gives you the durability you need for long-lasting performance. Bedford baffle panels also carry the NSF Standard 61 certification rating, so they can be used in potable water applications. Plus, they offer excellent installation flexibility. They can be attached to concrete walls using clip angles, mounted to columns, or attached to H-beams.



LOAD SPAN TABLE																		
Water Differential	1"		2"		3"		4"		5"		6"		8"		10"		12"	
Uniform Load	5.2 psf		10.4 psf		15.6 psf		20.8 psf		26.0 psf		31.2 psf		41.6 psf		52.0 psf		62.4 psf	
Span	L/D	FOS	L/D	FOS	L/D	FOS	L/D	FOS	L/D	FOS	L/D	FOS	L/D	FOS	L/D	FOS	L/D	FOS
8'	>360	>6	>360	>6	>360	>6	>360	>6	>360	>6	>360	>6	>360	>6	>360	>6	348	>6
9'	>360	>6	>360	>6	>360	>6	>360	>6	>360	>6	>360	>6	>360	>6	293	>6	244	>6
10'	>360	>6	>360	>6	>360	>6	>360	>6	>360	>6	356	>6	267	>6	214	>6	178	>6
11'	>360	>6	>360	>6	>360	>6	>360	>6	321	>6	267	>6	201	>6	160	>6	134	>6
12'	>360	>6	>360	>6	>360	>6	309	>6	247	>6	206	>6	154	>6	124	>6	103	5.1
13'	>360	>6	>360	>6	324	>6	243	>6	194	>6	162	>6	121	>6	97	5.7		
14'	>360	>6	>360	>6	259	>6	195	>6	156	>6	130	>6	97	>6				
15'	>360	>6	316	>6	211	>6	158	>6	127	>6	105	>6						
16'	>360	>6	261	>6	174	>6	130	>6	104	>6	87	>6						
17'	>360	>6	217	>6	145	>6	109	>6	87	>6								
18'	>360	>6	183	>6	122	>6	92	>6										
19'	311	>6	156	>6	104	>6												
20'	267	>6	133	>6														
21'	231	>6	115	>6														

Properties Per Full Width of Panel: A=9.584 in<sup>2</sup> I=9.85 in<sup>4</sup> S=6.97 in<sup>3</sup> | Weight: 7.89 lbs/ft



**BEDFORD REINFORCED PLASTICS: ONE CORPORATE DRIVE, SUITE 106, BEDFORD, PA 15522 USA**

The photographs and/or drawings in this literature are for illustrative purposes only. While every reasonable effort has been made to ensure the accuracy of this data, we are not responsible for any errors or omissions contained on these pages. Please verify any information in question with a Bedford sales representative. We reserve the right to make changes in specifications without notice and without incurring obligation.

© 2023 Bedford Reinforced Plastics. All rights reserved. v012023

Request a quote at [bedfordreinforced.com](http://bedfordreinforced.com) or call **814-623-8125**.